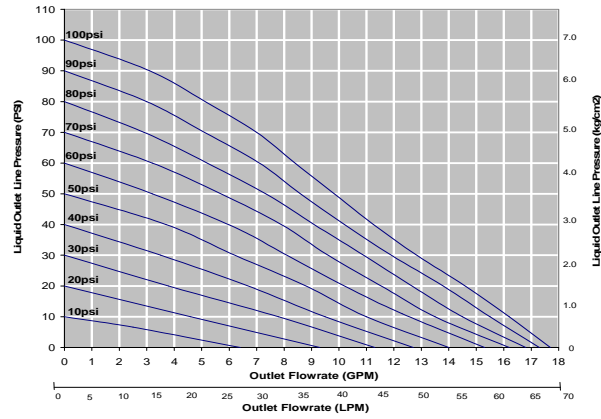


White Knight PL Series

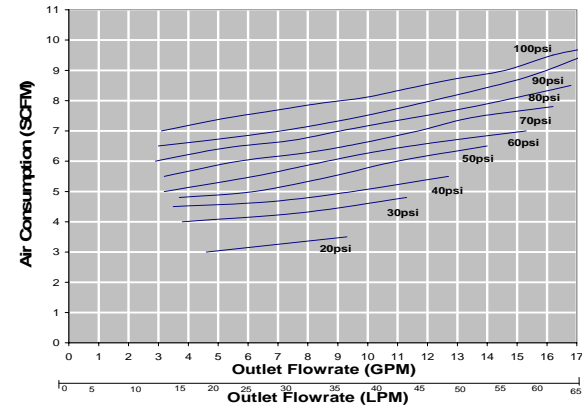


PL60 Data

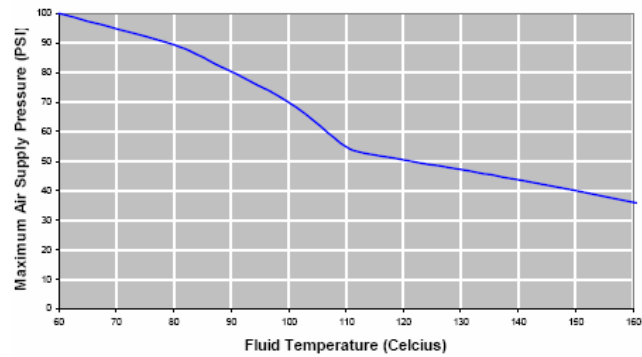
PL60 Head Pressure Line Chart



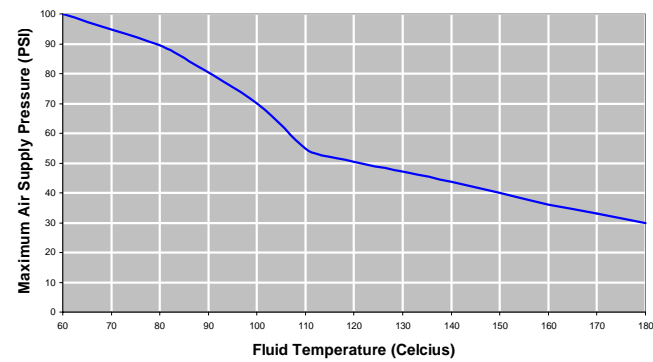
PL60 Air Consumption Line Chart



Renaissance Internal Shuttle Air Supply/Fluid Temperature Limitations

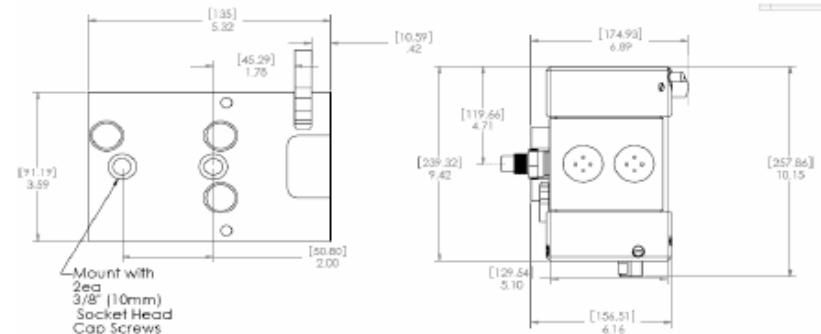


Renaissance External Shuttle Air Supply/Fluid Temperature Limitations



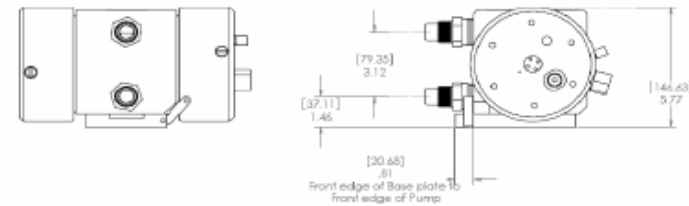
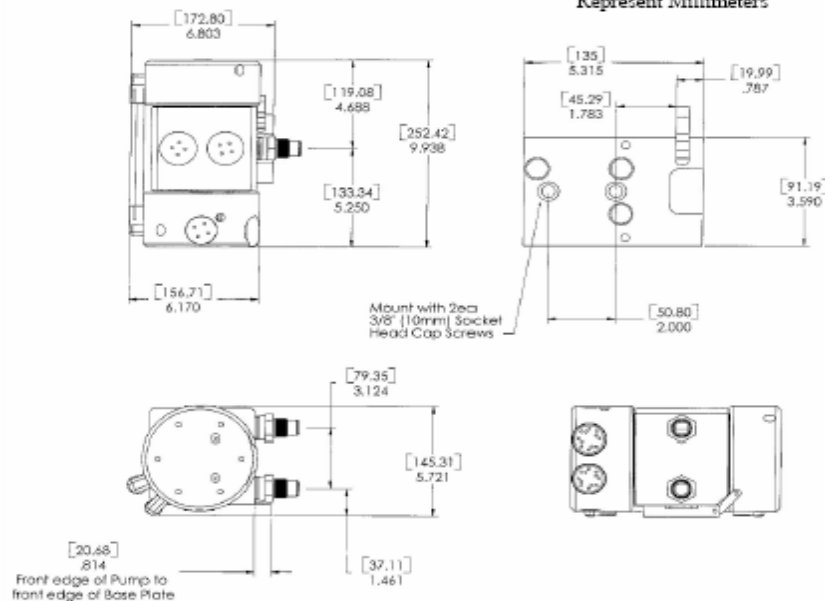
PL60 Single / Dual Air Dimensions

External Shuttle (Dual Slave Head)

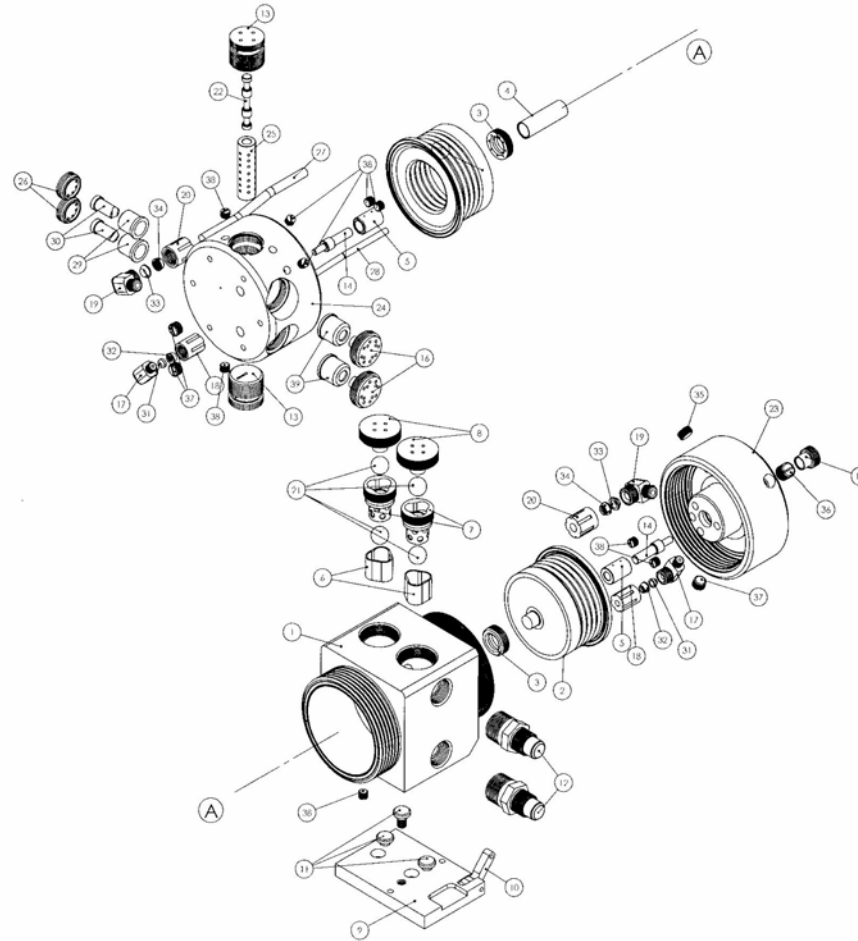


Internal Shuttle

Main Dimensions Shown In Inches. Dimensions In Brackets Represent Millimeters



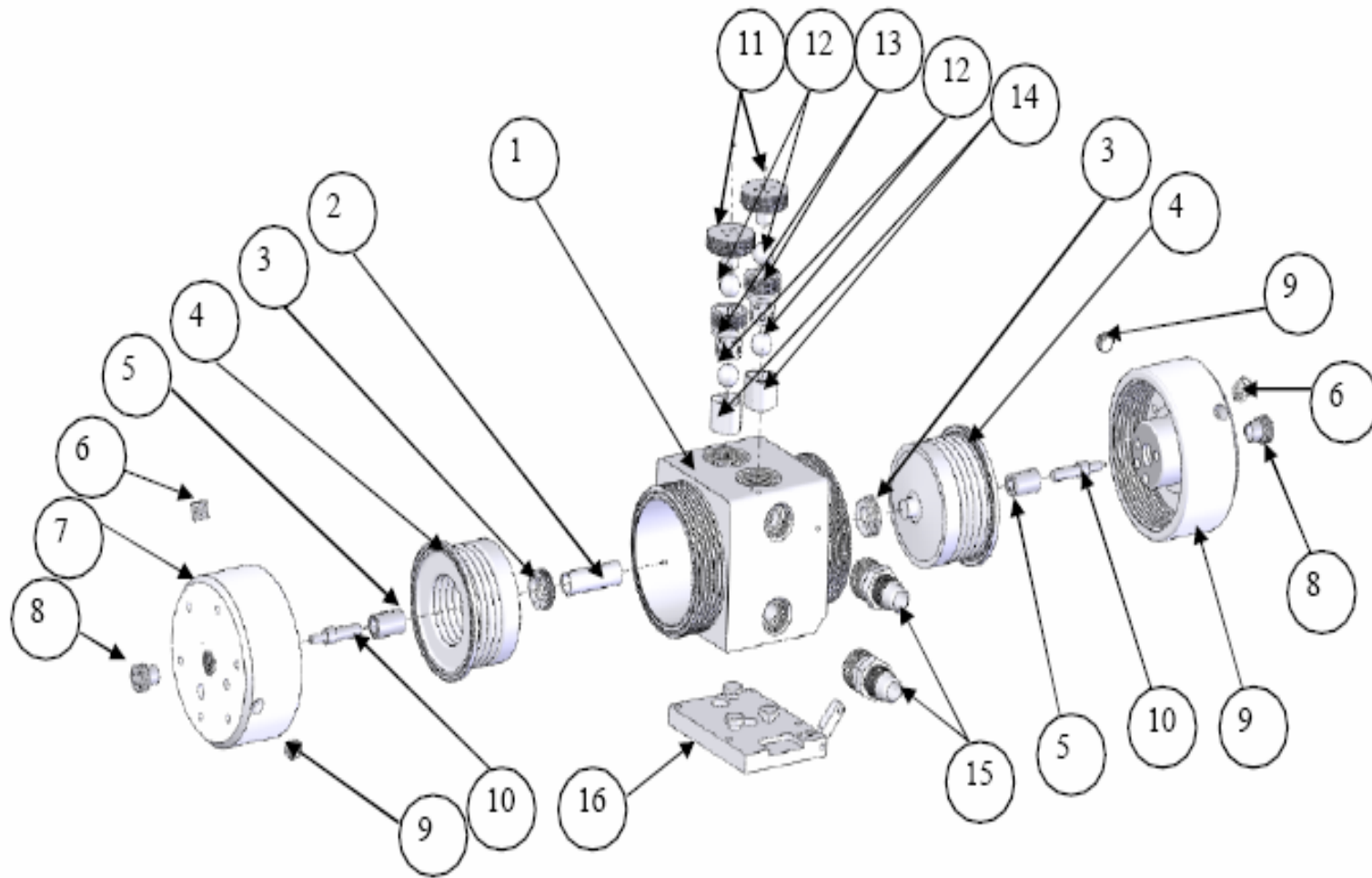
PL60 Single Air Supply Exploded



PL60 Single Air Supply Materials

ITEM #	DESCRIPTION	PART NO.	MATERIAL	ITEM #	DESCRIPTION	PART NO.	MATERIAL
1	Pump Body	PL60-125	PTFE	21	Check Ball, 3/4"	PL60-136	PTFE
2	Bellows	PL60-130	PTFE	22	Spool, Shift	PL60-C101	Ceramic
3	Shaft Seal	PL60-143	PTFE	23	Head, Slave	PL60-127-S	PP
4	Shaft	PL60-144	PFA	24	Head, Master	PL60-127-M	PP
5	Sleeve, Piston	PL60-128	Ceramic	25	Sleeve, Shift	PL60-C102	Ceramic
6	Bottom Check Cage	PL60-135	PTFE	26	Shift Muffler Cap	PL60-156-S	PTFE
7	Top Check Cage	PL60-142	PTFE	27	Air Tube, 3/8"	PL60-SUPPLY	PFA
8	Top Check Plug	PL60-140	PTFE	28	Air Tube, 1/4"	PL60-SHIFT	PFA
9	Base Plate	PL60-162	PP	29	Muffler Insert, 5gpm	PL60-158-05	PTFE
10	Base Lever	PL60-162-L	PP	30	Whisper Muffler Pin	PL60-201	PTFE
11	Base Mount Knobs	PL60-162-K	PP	31	Ferrule 1/4"	PL60-173-F	PTFE
12	Fitting, Inlet/Outlet	PL60-190	PFA	32	Gripper 1/4"	PL60-173-G	TEFZEL
13	Shuttle Cap	PL60-152	PTFE	33	Ferrule 3/8"	PL60-171-F	PTFE
14	Shift Piston	PL60-134	Ceramic	34	Gripper 3/8"	PL60-171-G	TEFZEL
15	Piston Cap	PL60-112	PTFE	35	Tube Nut Plug (Short)	PL60-PLUG2	PTFE
16	Muffler Cap	PL60-156	PP	36	Stroke Detect Plug	PL60-PLUG1	PTFE
17	Shift Elbow Fitting 1/4"	PL60-173	PP	37	1/4-18 NPT Plug	PL60-250PLUG	PTFE
18	Shift Elbow Nut 1/4"	PL60-173-N	PP	38	1/8-27 NPT Plug	PL60-150PLUG	PTFE
19	Supply Elbow Fitting	PL60-171	PP	39	Muffler Insert, 10gpm	PL60-158-10	PTFE
20	Supply Elbow Nut	PL60-171-N	PP				

PL60 Dual Air Supply Exploded

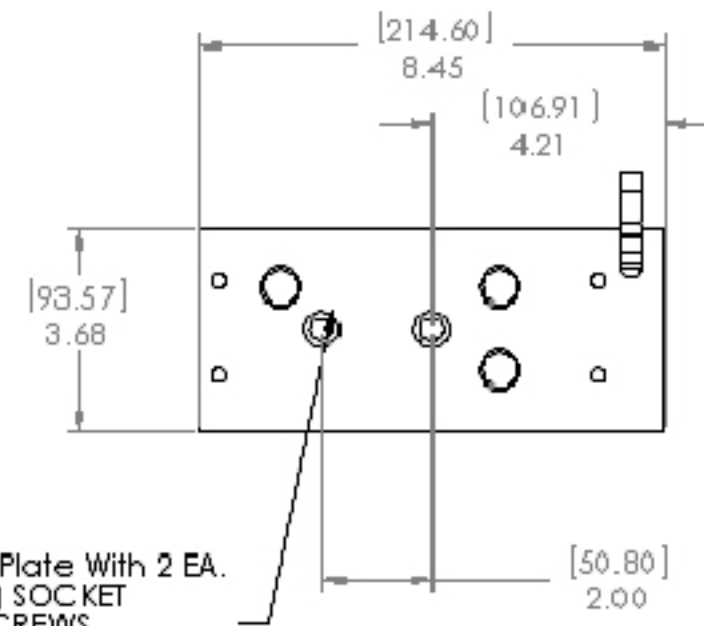
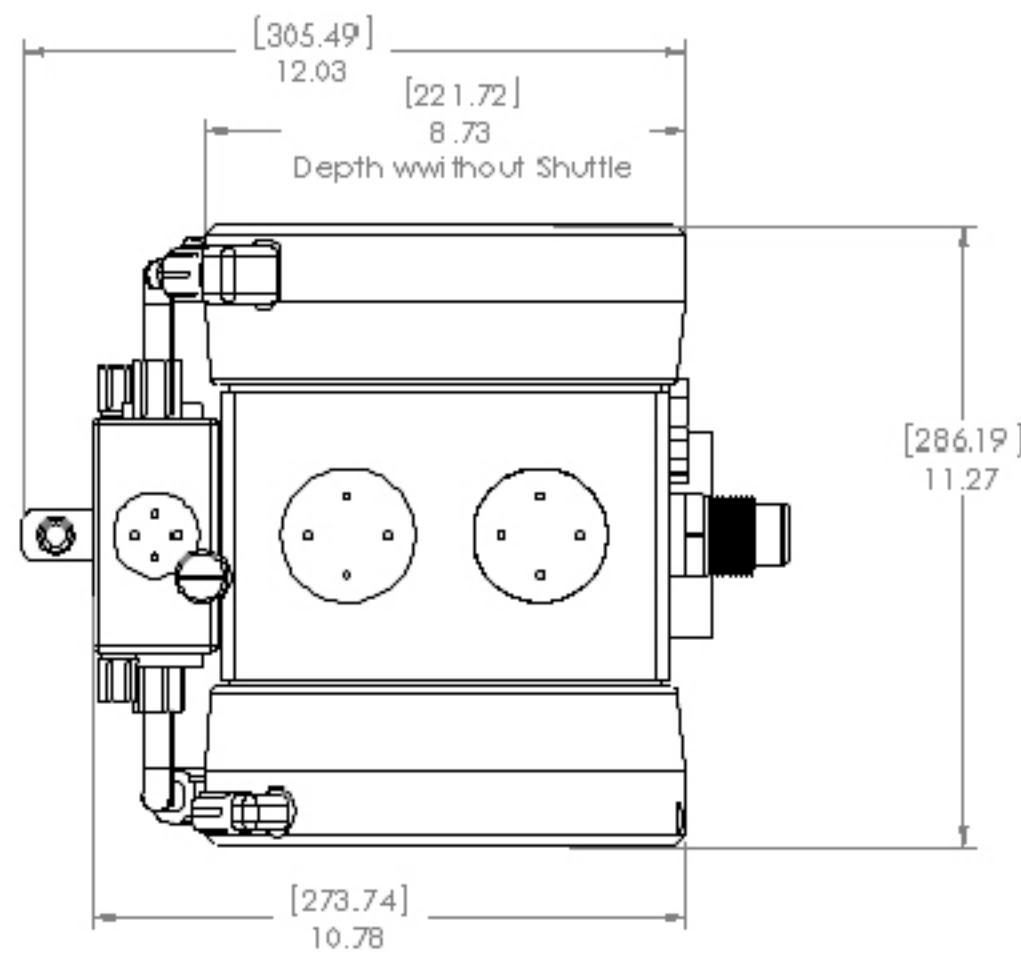


PL60 Dual Air Supply Materials

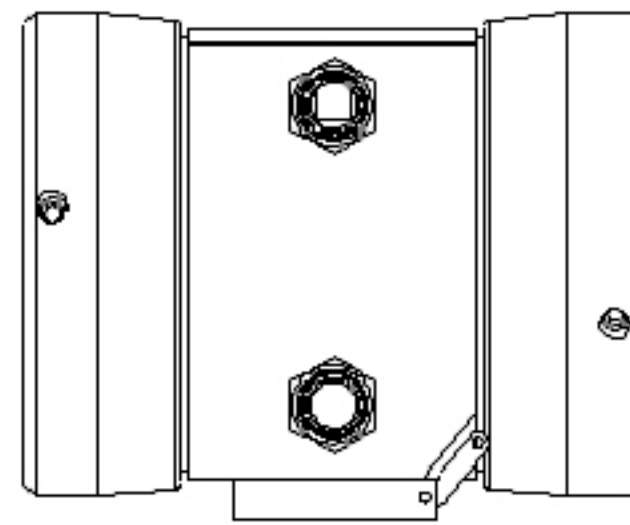
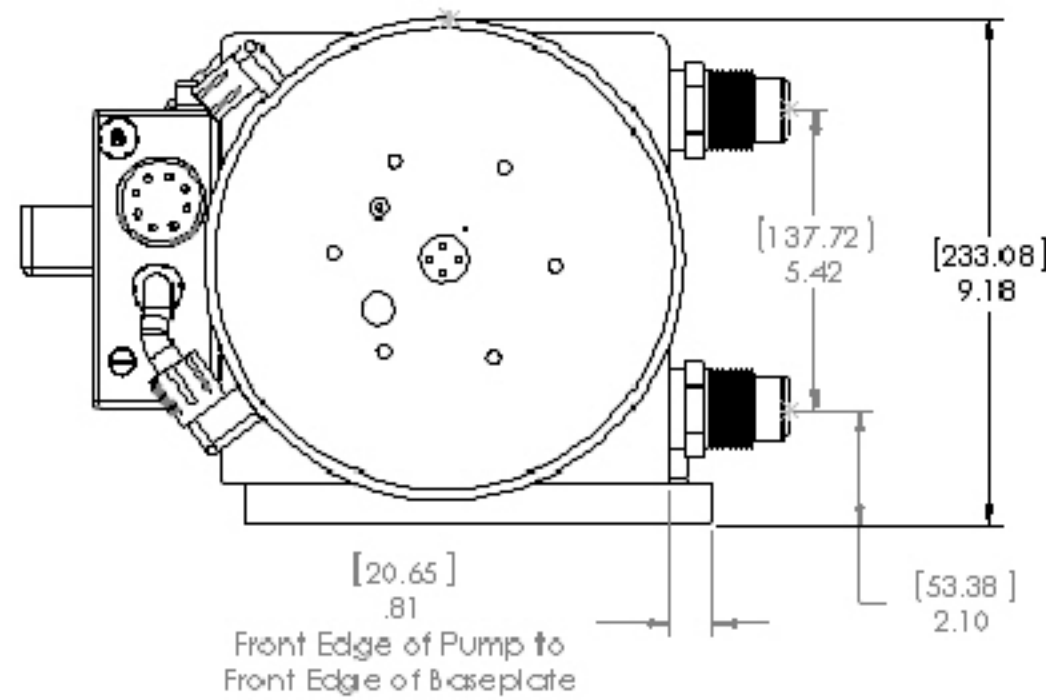
ITEM	DESCRIPTION	PART NO.	MATERIAL
1	Pump Body	PL*-125	PTFE
2	Shaft	PL*-144	PFA
3	Shaft Seal	PL*-143	PTFE
4	Bellows	PL*-130	Mod. PTFE
5	Piston Sleeve	PL*-128	Ceramic
6	Stroke Detect Plug	PL*-PLUG1	PTFE
7	Head, Slave	PL*-127-S	Polypropylene
8	Piston Cap	PL*-112	PTFE
9	¼-18 NPT Plug	PL*-250PLUG	PTFE
10	Shift Piston	PL*-134	Ceramic
11	Top Check Plug	PL*-140	PTFE
12	Check Ball ¾"	PL*-136	PTFE
13	Top Check Cage	PL*-142	PTFE
14	Bottom Check Cage	PL*-135	PTFE
15	Fitting, Inlet/Outlet	Varies	PTFE/PFA
16	Base Plate Assembly	PL*-162-Assembly	Polypropylene

Renaissance PL120

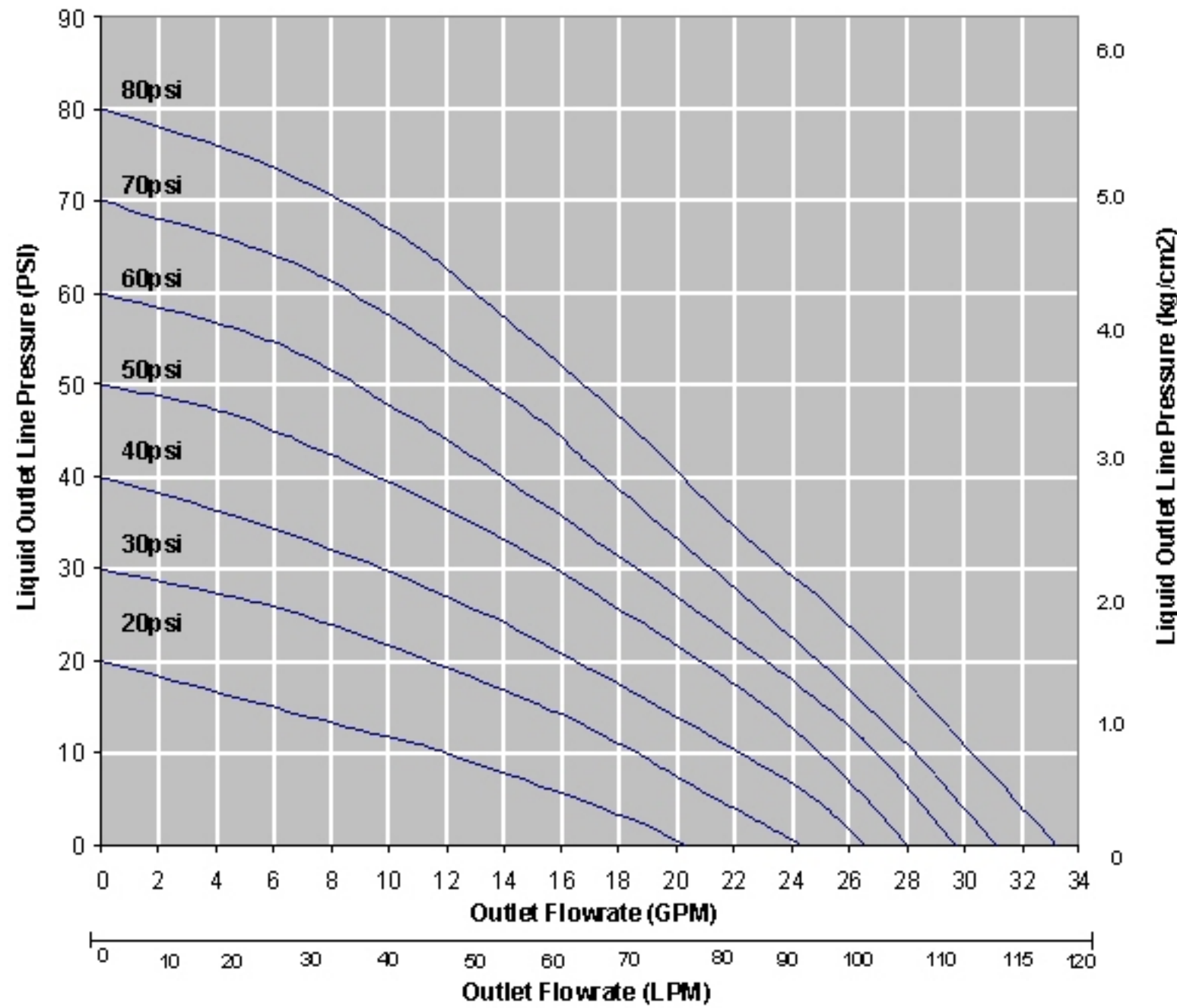
Main Dimensions Shown In Inches. Dimensions In Brackets Represent Millimeters



Mount Base Plate With 2 EA. 3/8" (10 mm) SOCKET HEAT CAP SCREWS



PL120 Head Pressure Line Chart



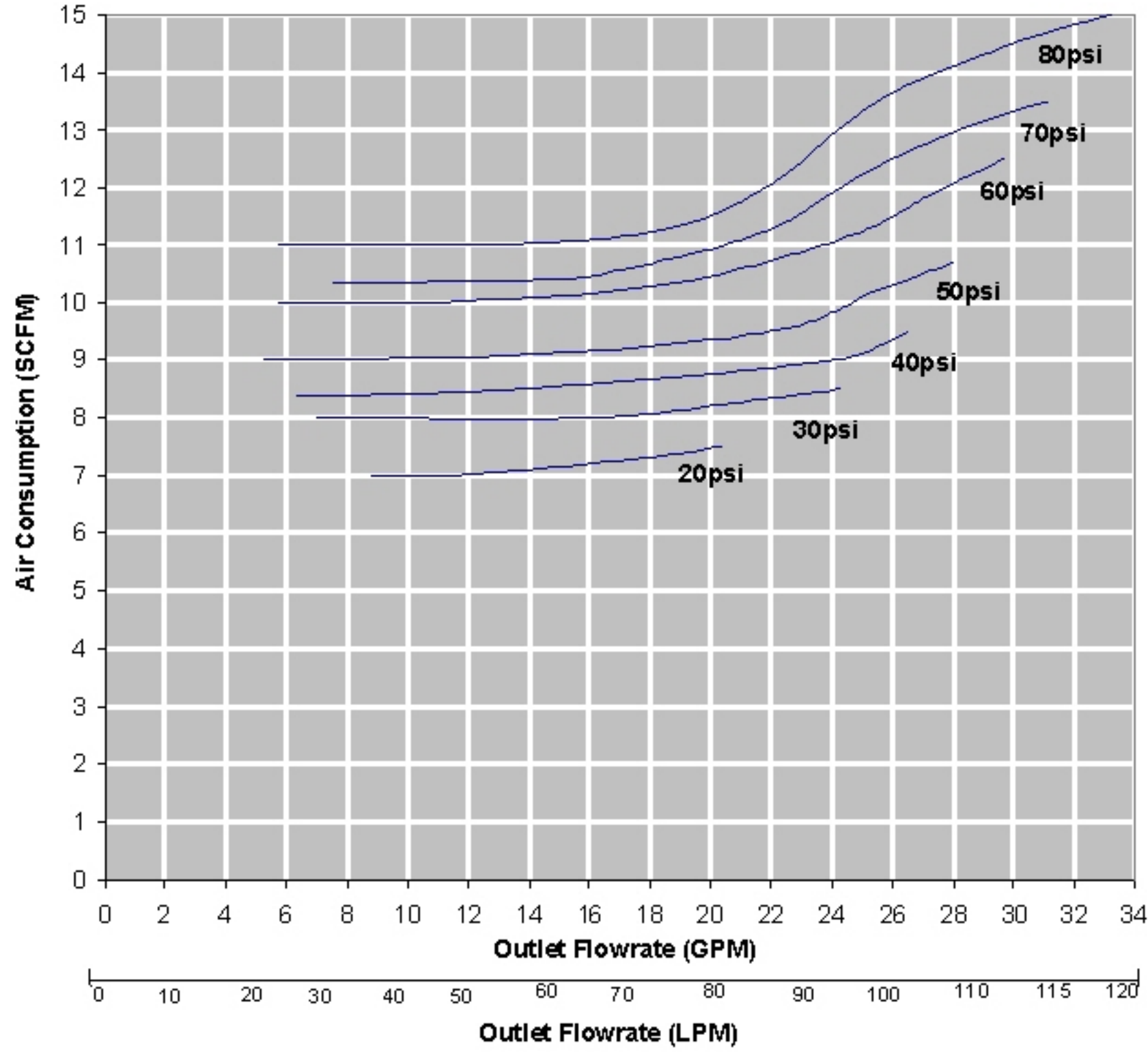
White Knight

FLUID HANDLING, LLC

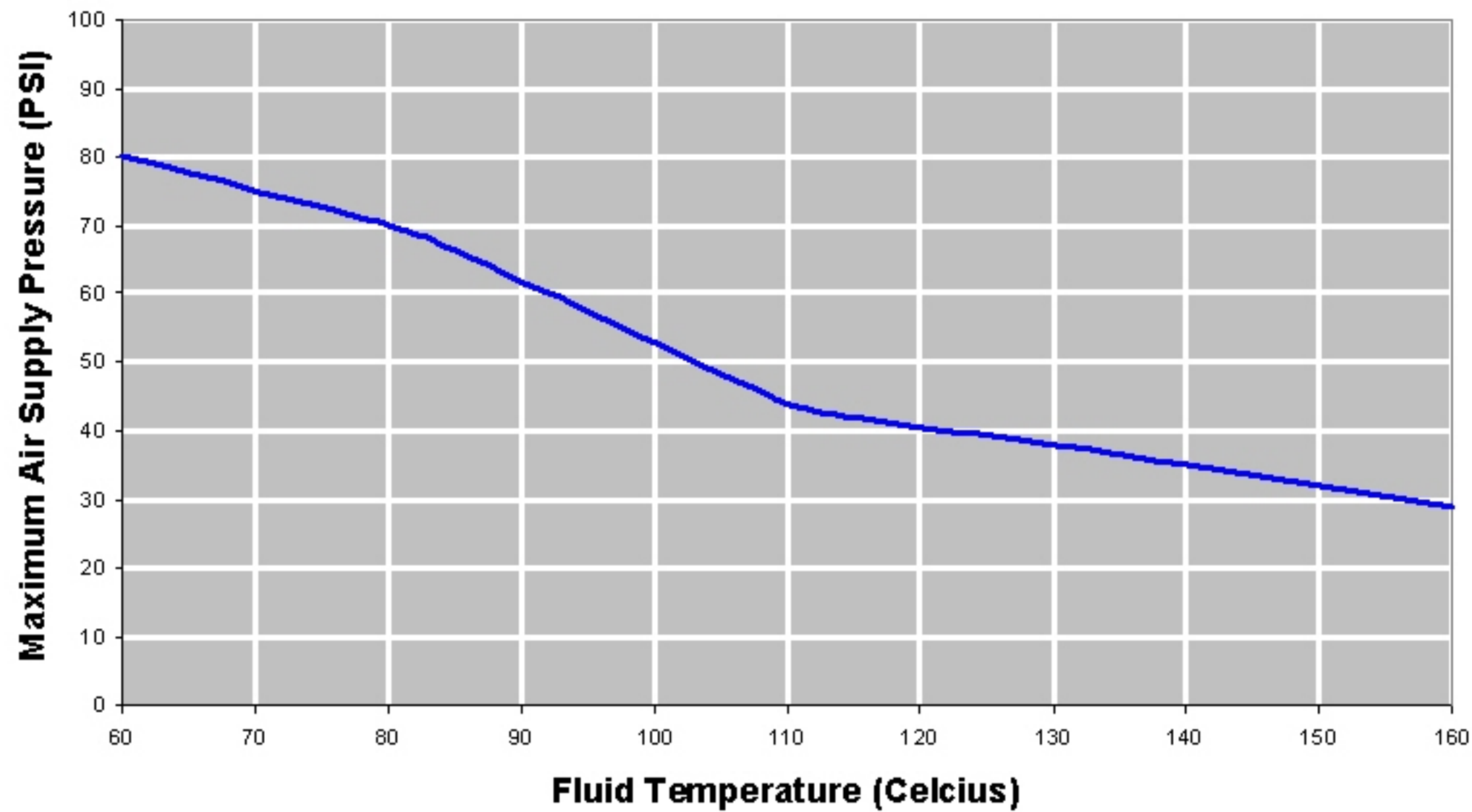
187 E. 670 S. • Kamas, UT 84036
 Phone (435)783-6040 • Fax (435) 783-6128
 Toll Free 1-888-SYNCHRO (1-888-796-2476)
 WWW.Whiteknightpumps.com

Renaissance PL120

PL120 Air Consumption Line Chart



Renaissance PL120 Air Supply/Fluid Temperature Limitations



White Knight

FLUID HANDLING, LLC

187 E. 670 S. • Kamas, UT 84036
 Phone (435)783-6040 • Fax (435) 783-6128
 Toll Free 1-888-SYNCHRO (1-888-796-2476)
WWW.Whiteknightpumps.com